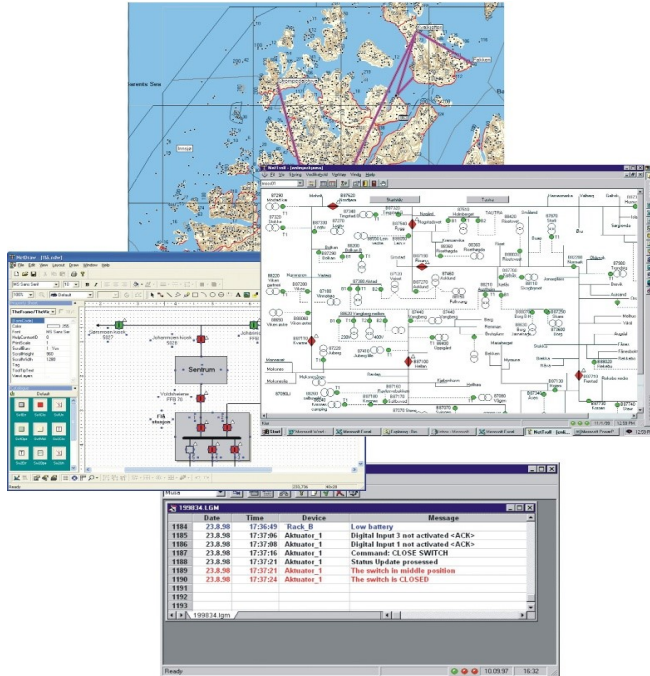




# NetTroll<sup>®</sup> 4

The powerful SCADA system for NORTROLL's distributed applications.



Take control over your remote devices with our low-cost, flexible SCADA software.

Don't worry about communication media. Don't worry about complex programming algorithms or high user thresholds.

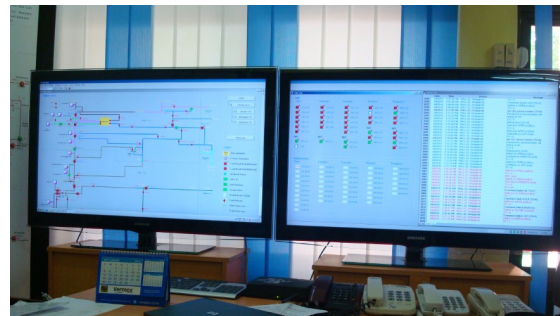
NetTroll 4.0 is the intelligent choice. The built-in device configuration tool and drawing editor enable you to control and monitor your fault passage indicators and RTU's in your own tailored environment.

## Features

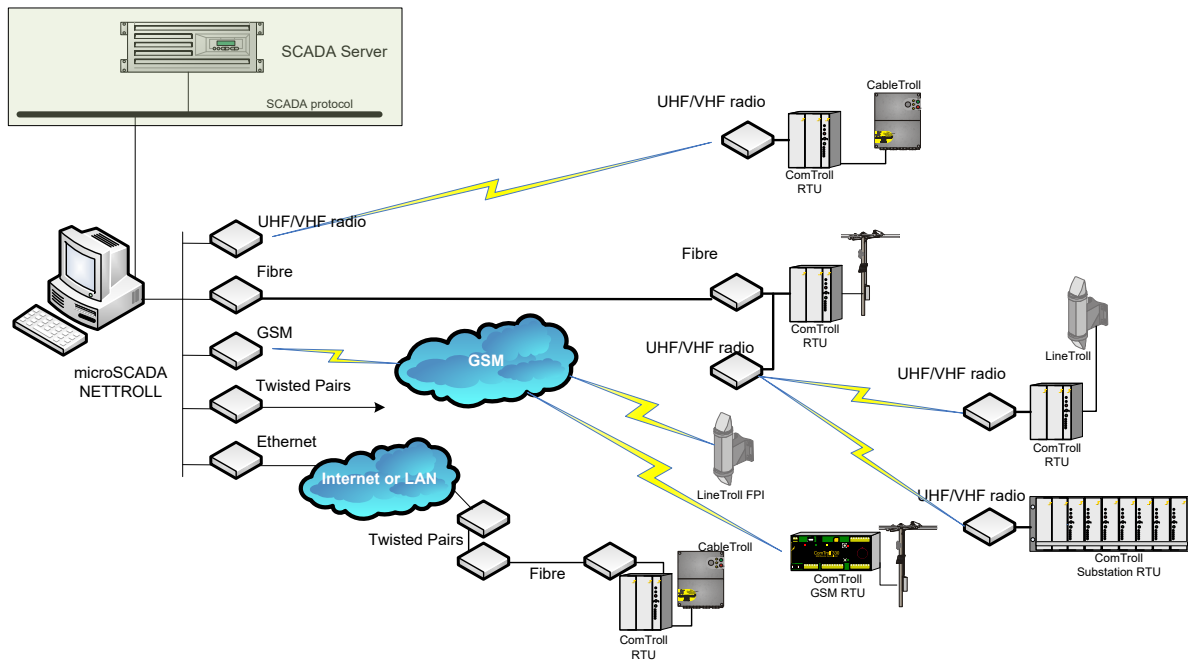
- Runs on a standard Windows PC platform.
- Easy installation and configuration.
- Easy-to-use operator interface.
- User defined logs for monitoring of specific events.
- Advanced Alarm Management.
- Built-in Conditional Actions Module (CAM)
- Ideally suited for monitoring and control of report-by-exception fault passage indicators and RTU's.
- Secure password protected user levels.
- Advanced graphical features.
- Built-in bitmap editor for creating user defined symbols.
- Device specific message properties.
- Unlimited number of devices can be installed.
- Easy Master SCADA integration with a wide range of SCADA protocols.

## Applications

- Surveillance and control of all NORTROLL report-by-exception applications
- Fault Passage Indicators
- Remote Terminals in substations
- Overhead-line actuators.
- Water reservoir monitoring and control
- Distributed generation applications
- Street lights control
- ...and more!



# The ComTroll System Architecture



## Supplementary Applications

### NetAlert

NetAlert is a program that sends SMS alarms to one or more pre-defined users set up in a call list. NetAlert forwards messages set up as an alarm in the message properties in NetTroll. The SMS will contain the same alarm string as defined for the actual message in NetTroll. It also contains date, time and the outstation name.

### NetGraph

NetGraph is a program to graphically present analog values from the outstations. Every time an updated analog value is received by NetTroll, the analog value is stored in a separate log. NetGraph continuously reads this log and updates the actual curve in real-time. All scales are dynamic and will be adjusted according to incoming values.

### NetTroll SCADA Gateway

The NetTroll SCADA Gateway comprises a protocol engine for the SCADA protocol that is run and a cross-reference table. NetTroll will appear in the SCADA network as a SLAVE. The NetTroll SCADA Gateway can be controlled from up to ten SCADA Masters.

### Ordering Information

15-7540-51	NetTroll 4 classic
15-7540-52	NetTroll 4 messenger
15-7540-50	NetTroll 4 plus
15-7500-40	NetTroll SCADA Gateway
15-7500-10	NetGraph 2.0
15-7500-02	NetAlert 3.0 SMS Alarm module w/GSM Modem
15-7540-03	NetTroll 4 Upgrade

## About Nortroll AS

Since the foundation in 1976, Nortroll AS has devoted its activities to the development of equipment aiming to reduce electric utilities outage times. We offer a wide range of products for fault detection and remote operation in the MV Distribution Network.

## Your Representative

ComTroll®